

**ORDINANCE NO. 186**

**CAMAS COUNTY/CITY OF FAIRFIELD AREA OF CITY IMPACT MAP**

AN ORDINANCE OF CAMAS COUNTY, IDAHO, IDENTIFYING AND ADOPTING A MAP OF THE CAMAS COUNTY /CITY OF FAIRFIELD AREA OF CITY IMPACT WITHIN UNINCORPORATED CAMAS COUNTY; PROVIDING A SAVINGS AND SEVERABILITY CLAUSE; AND PROVIDING AN EFFECTIVE DATE.

WHEREAS, this ordinance is enacted to ensure that the City of Fairfield has adequate land area for future growth, and to ensure that development of land surrounding Fairfield does not directly or indirectly negatively impact Fairfield's provision of services, infrastructure or quality of life; that lands are planned carefully so as not to prohibit future annexation and urban densities; and to ensure that development is in accordance with the Camas County and City of Fairfield's Comprehensive Plans for the desirable future physical development of Fairfield; and

WHEREAS, this ordinance is adopted pursuant to authority granted by Idaho Code §67-6526, as amended in 2024;

WHEREAS, all notices required in Idaho Code Idaho §67-6509 have been adhered to prior to the adoption of this ordinance;

WHEREAS, Camas County and the City of Fairfield have worked closely together to identify and negotiate an "Area of City Impact Map";

WHEREAS, Camas County Planning and Zoning and the Board of County Commissioners conducted public hearings regarding the proposed Area of City Impact Map; and considered questions regarding the trade area, geographic factors and areas that might reasonably be considered for annexation;

WHEREAS, the City of Fairfield conducted public hearings by the Planning and Zoning Commission and City Council, and considered questions regarding trade area, geographic factors and areas that might reasonably be considered for annexation;

WHEREAS, the Fairfield City Council, adopted the Fairfield Area of City Impact, Ordinance #223 with amended 2025 Map;

WHEREAS, Idaho State Senate Bill No. 1403, enacted July 1, 2024, states in §2: 67-6526 Areas of Impact: '(4)(h) Prior to considering a request to establish, modify, or confirm an area of impact, the governing boards may, but are not required to, submit the request to

the planning, zoning, or planning and zoning commission for recommendation. ...' allowing counties to update City Areas of Impact without County Planning and Zoning Commission review;

WHEREAS, Camas County has evaluated and confirmed that the existing Area of City Impact boundaries meet Idaho State statutory requirements of § 67-6526 as amended in 2024;

WHEREAS, Camas County and the City of Fairfield have found that the proposed Area of City Impact Map, also shown in the 2025 Map recommended for reaffirmation as Exhibit 1 of this Ordinance, is consistent with the governing bodies' respective Comprehensive Plans.

NOW, THEREFORE, BE IT ORDAINED BY THE BOARD OF COUNTY COMMISSIONERS OF CAMAS COUNTY, IDAHO, AS FOLLOWS:

Section 1. 2025 Map - Exhibit 1 attached hereto is adopted as the Camas County/Fairfield Area of City Impact Map.

Section 2. If any section, paragraph, sentence, or provision hereof or the application thereof to any particular circumstances shall ever be held invalid or unenforceable, such holding shall not affect the remainder hereof, which shall continue in full force and effect and applicable to all circumstances to which it may validly apply.

Section 3. All ordinances and parts of ordinances in conflict herewith are hereby repealed.

Section 4. This Ordinance shall be in full force and effect from and after its passage, approval, and publication according to law.

Ordinance # 186 Camas County/Fairfield Area of City Impact 2025 Map regularly passed, approved, and adopted by the Board of County Commissioners of Camas County, Idaho, this 29th day of December 2025.

////////////////////////////////////

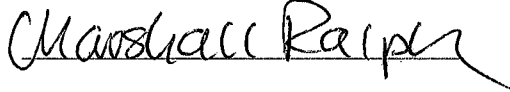
BOARD OF COUNTY COMMISSIONERS OF CAMAS COUNTY IDAHO



Travis Kramer, Chair



Galen Colter, ~~Vice Chair~~ Commissioner



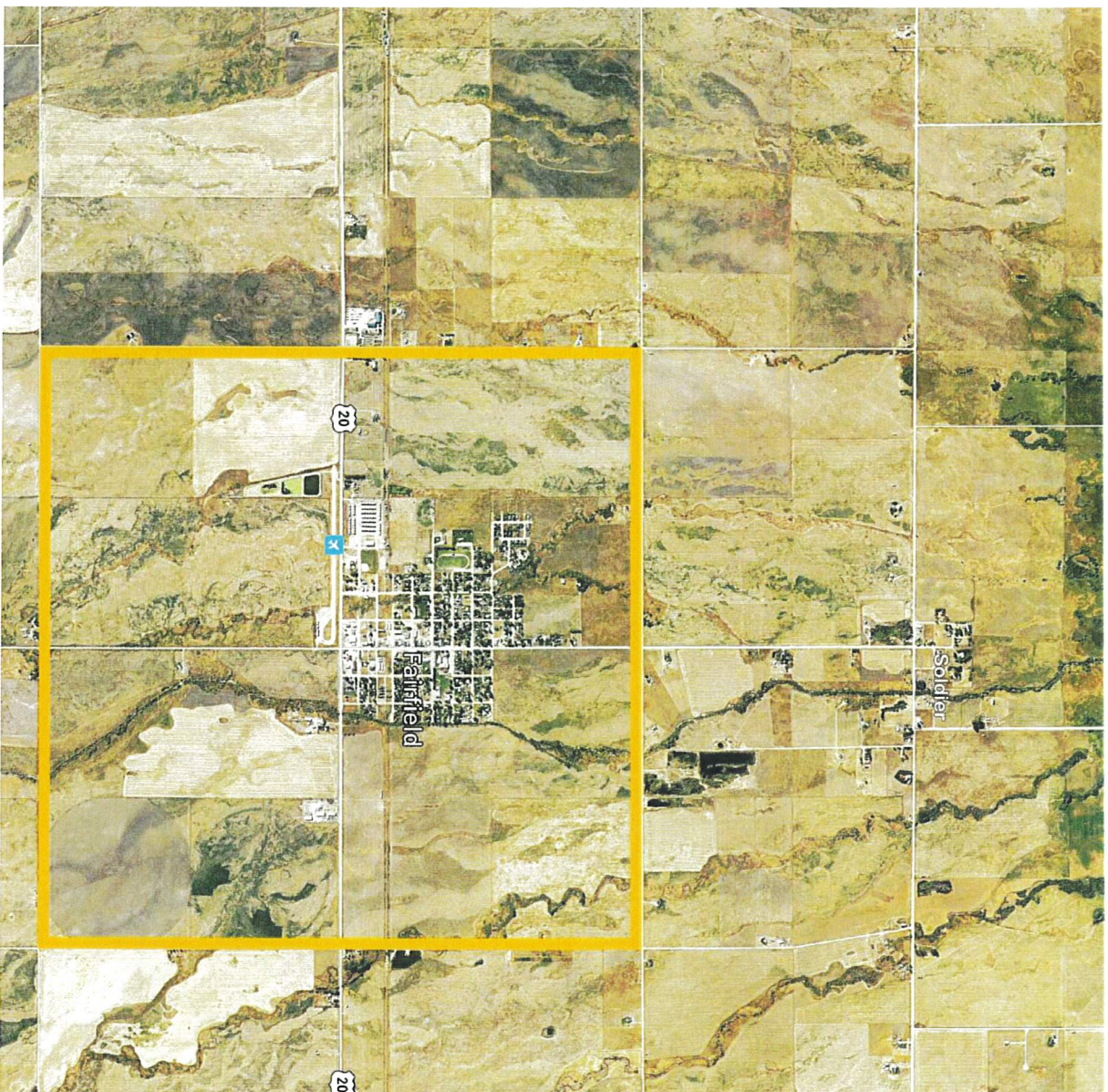
Marshall Ralph, ~~Commissioner~~ Vice Chair

ATTEST: 

Deanna Lenker, Clerk (seal)

Published in the Camas Courier

December 24, 2025



# **Area of City Impact for the City of Fairfield and Camas County, Idaho**

On the north: Work Road from Gardner Road on the west to Soldier Road and from Soldier Road eastward on the land boundary line to White Lane.

On the west: Gardner Road from Work Road on the north to Wilder Road on the south.

On the south: Wilder Road from Gardner Road on the west to Reynolds Lane on the east.

On the east: White Lane from one mile north of Highway 20 to Highway 20 and Reynolds Lane from Highway 20 to Wilder Road.